

THE WHISTLE POST
*The Official Publication of the Garden State Division,
Northeastern Region, NMRA*
Issue # 102 Spring 2007

<http://www.trainweb.org/nergsd/index.htm>

Email: gsdtrains@yahoo.com

Tom Wortmann President

Norman Frowley Vice President



"Another year of Model Railroading and Railfanning".

We had a good turnout for our winter meet and the Ramapo Club held a special operating session, just for us and we clearly left too early to attend to other business but I got to run two trains and in doing so got a great detailed look at their layout. Thank you for a great time.

It's nice to know that New Jersey Transit has lifted their ban on taking photographs of their equipment. Rumor has it that the M&E has done the same.

More good news, as you all know the Union Pacific has finally dropped their licensing fee lawsuits and modelers can freely buy their logos. For our model manufacturers that was some nightmare.

The fall meet is already planned to be in conjunction with the New York Society of Model Engineers scale show so you get to see both and before that we're hoping to do a rolling meet this summer to some member's homes. If you have a layout and would like to open it for all of us to see, please let us know. There is no layout criteria, other than you welcoming us in. We are hoping that those who were kind enough to open up for the our convention would so for future events such as rolling meets as well as others who for whatever reason could not open for the convention.

I'm looking forward to a spring, summer and fall of model railroading. I hope you are too."

Tom Wortmann

Upcoming Events

Summer Barbecue and Rolling meet.

July 29th, 12 Noon, at the Garden State Model Railway Club, North Haledon, New Jersey.

Summer will soon be upon us and now is the time to work outdoors, plant a garden and take care of the lawn. It's also the time for BBQ's and visits with friends. That's exactly what the GSD is planning this summer. A BBQ hosted but the Garden State Model Railway club in North Haledon NJ (which will be open for your pleasure and well as it's O scale neighbor the Model Engineers Railroad Club of North Jersey) AND a list of other layouts you could visit during the day.

This should prove to be a fun day. Train BBQ and more trains. We're asking layout owners to help out by adding their name to the list of open houses.

As always we are looking for folks to help out. You could open your home to our members, cook a few hot dogs, bring some soda, and at our regular events, give a clinic, bring ion a model to show off, drive a neighbor or a friend to one of our meets. You will always make a new friend no matter what you do.

Fall 2007 Meeting

The meeting will be held at the New York Society of Model Engineers at their club in Carlstadt, NJ, on October 27th, 2007. Clinics for this meet are already in preparation. We have two tentative talks on railroad preservation, the New York Central Highline on the west side of Manhattan and the PATH Powerhouse and Bergen Arches in Jersey City. Judging will also be available for get your models ready as well.

GSD Young Program at Lake Mohawk

Judy and Anthony Piccirillo have created a superb program for September 22, 3:00 PM in conjunction with Lake Mohawk's Sleepy Lagoon Beach Community organization. Four model railroading events are planned for the children and teenagers, a TimeSaver contest, model building clinic, a 4x4 HO scale test layout, and a locomotive race.

The Byram Township Boy Scout troop plans to use this program to earn their Railroad Merit Badges.

Dick Flock of the NMRA Educational Committee has arranged for the donation of rolling stock kits as well as 4 cartons of other materials for the event. Gregory Yuskaitis, President of Sleepy Lagoon Beach will provide a large tent so that the scheduled events will take place whatever the weather.

Lake Mohawk Community is a small private lake community in Northern New Jersey. A man-made lake created in 1929 that is 4 miles long and about 1 mile wide. There are 12 beaches each with its own president and event committee.

Judy and Anthony Piccirillo started a Sleepy Lagoon Fishing Derby for kids in 2000 with 9 children and 4 parents. In 2006, we had over 55 children and an equal number of parents and grandparents.

The assistance of GSD members is needed to make this day successful. If you have children or grandchildren who would like to participate, please pre-register by sending an e-mail to Anthony at Anthony13Trains@embarqmail.com. Volunteers are also needed to help with the events.

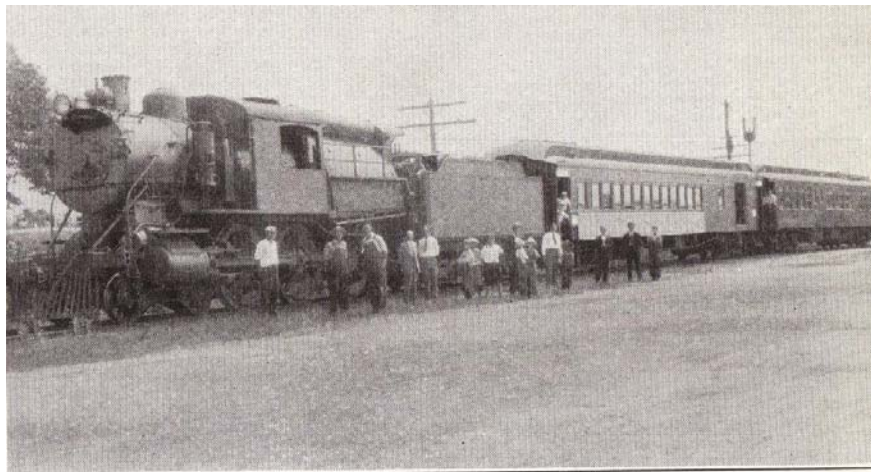
Mystery Photograph

The narrow gauge shunting locomotives pictured in the last issue's mystery photograph have still not been positively identified. George Duve has stated that the "...mystery photo is not from the New York /New Jersey Harbor. It is the Pennsylvania RR Ore Dock in Cleveland. Pictures of these locomotives can be seen on the web under "Hewlett unloaders" Cleveland. Tyler Turpin has expressed the same opinion.

Other correspondents have said that the photograph is indeed of the Lehigh Valley, Claremont Terminal, New Jersey. Rich Chapin writes that the Lehigh Valley had 5 shunters at Claremont, numbered 10 to 14. They were electric, third rail.

The editor is of the opinion that these locomotives are Lehigh Valley. But the conclusive evidence would be the presence of Hewlett Unloaders at the Claremont terminal. The New York Times wrote in 1920, "At the extreme outer end a modern plant for the unloading of ore from vessels to cars will be installed, containing four unloaders. It will be possible to unload ships at the rate of 2,5000 tons of ore an hour...the loaders would be used principally by the Bethlehem Steel Company in connection with the movement of ore from the steamships...to its plant at Bethlehem..."

Thanks to all who have written with their comments!



DEMONSTRATION TRAIN
State Department of Agriculture

This issue's mystery photograph is for CNJ fans. In the summer of 1928 the New Jersey Department of Agriculture sent a special train to 12 communities on the CNJ lines with agricultural exhibits in the cars. One of the passenger coaches was fitted as a lecture hall for presentations about the latest scientific farming techniques.

Can any readers supply more information about this train?

About the Whistle Post

The Whistle Post is the official newsletter of the Garden State Division of the Northeastern Region of the National Model Railroad Association, Inc. The deadline dates for submission to the Newsletter for 2007-2008 are October 10th, January 10th, April 10th and July 10th.

Articles should be submitted to Kevin Olsen, Editor of the Newsletter, at olsenkbc@juno.com or 1 Shady Terrace, Wayne, NJ 07470.

For those of you just joining or who do not wish to have your Whistle Post mailed to you, or prefer a color copy, please go to our website at <http://www.trainweb.org/nergds/Newsletter.htm>. You will need a Adobe Reader to view and print them using your computer.

The Whistle Post mail subscription rate is \$7.00 per year. To renew, send a check or money order payable to the Garden State Division, and include your name, NMRA membership number, full address, telephone number and email address (if you have one). Payment should be sent to:

Roger Oliver
61 Franklin Road
Denville New Jersey 07834-1558

**The Whistle Post, Newsletter of the Garden State Division NMRA
Please inform us of any address corrections**

