

THE WHISTLE POST
*The Official Publication of the Garden State
Division,
Northeastern Region, NMRA*
Issue # 101 Winter 2007

<http://www.trainweb.org/nergds/index.htm>
gsdtrains@yahoo.com

Email:

Tom Wortmann Pres.

Norman Frowley VP



Highlights of the Winter Meeting and Election of Division Officers

The Division's 2007 Annual Business Meeting was held on January 21, at the Ramapo Valley Model Railroad Club in Ho-Ho-Kus, New Jersey. After the updates and reports from the various officers and committees it was announced that *The Delaware Trophy* used for the Modeler of the Year Award had been renamed *The Paul Mallory Award*. A committee is updating the criteria to win the award and when it will be presented. In new business, Ed Fraedrich reported that the *Garden State Model Railway Club* in North Haledon, will make its recently acquired outdoor space available for Division activities. Division director Tom Casey discussed a dual meet in the Fall of 2007 to be held in conjunction with the 'New York Society of Model Engineers' show in Carlstadt, New Jersey.

Norman Frowley suggested having more show-and-tell events at Division meetings as a means of boosting model-building interest. Norman displayed his present work-in-progress model as an example of this type of event. (Editor's note: Any Division member with an interesting modeling project or area of expertise is welcome to present a clinic at any upcoming meeting.)

The Officers and Directors for 2007 are:

President	Tom Wortmann	(2007-2008)
Vice-president	Norman Frowley	(2007-2008)
Secretary	Ciro Compagno	(2007-2008)
Treasurer	Roger Oliver	(2007-2008)
Director	Bob Tumielewicz	(2007-2009)
Director	Tom Casey	(2007-2008)

Director	Anthony Piccirillo	(2007-2009)
Director	Ed Fraedrich	(2007-2009)

A new Director, George Duve has been appointed for the 2007-2008 term. He replaces Karen Parker.

The next meeting is scheduled for April, 22, 2007, At the Model Railroad Club in Union, NJ

Thanks to Ciro Compagno for his report on the meeting.

Following the business meeting the Ramapo Valley Club hosted an operating session on their club layout. Photographs by Robert Turnielewicz.



The Ramapo Valley Club did a wonderful job hosting the operating session. Each visiting crew was piloted through the layout by a club member who kept in touch with the dispatcher. Each train in the schedule was staged ahead of time and identified by a sticker with its number stuck to the roof of the lead engine. The club operates with a fast time clock. Throttles are DCC with memory and there are working block signals.

Membership Information Request

The New Year is a time for getting organized and the Garden State Division is taking this opportunity to update its membership lists. It is especially important that we have current e-mail addresses.

In order to expedite this process, please use an e-mail to send the following information to the Division care of Tom Casey at: TCCasey@co.bergen.nj.us

Name, Mailing address, Phone number, and e-mail address.

New Members Report

In our last issue we welcomed three new members to the division, Martin Boyle of Hackettstown, and Gerald and Patricia Kimble of Monroe Township. Shortly after the issue went to press we learned a little more about Martin Boyle and his interests. He has been active in Hobby for about one year and he became interested after attending club shows with a friend. A native of the Jersey City - Bayonne area, Martin is now modeling the Jersey City waterfront in HO Scale. His time span 1954 to 1994 featuring the Central New Jersey, Conrail, NJ Transit and Amtrak. Although he has completed about 60 building and has made a start on the benchwork, he expects the layout to take about 5 years.

The Garden State Division also welcomes Christopher Boscarion, of West New York and John Castellucci, of Oak Ridge!

Upcoming Garden State Division Meetings

Discussion have been talking place about organizing a joint meet between the Sunrise Trail Division of Long Island and the Garden State Division. Tentative plans are for one weekend devoted to home layouts on long Island and another weekend visiting the home layouts of the Garden State Division. There has also been interest expressed by the New Jersey Division about another joint meet.

April 22nd, 2007, GSD Spring meet at the Model RR club Inc, Union NJ, 12:00 pm

July 22-27, 2007 Great Lakes Express

October 27, 2007 GSD Fall Meet with New York Society of Model Engineers, 12:00 pm

Other Upcoming Events

Prototype Modelers Meet, June 1 and 2, Canton Community Center, 40 Dyer Ave., Collinsville, Connecticut. Web site: http://www.pbase.com/tom_murray
Registration fees (\$25) can be sent to Fran Richard, 34 Ellsworth Road, West Hartford, Conn. 06107.



This nice looking Conrail diesel is typical of the models exhibited at the meet.

This will be an exciting meet with lots of fine modeling and opportunities to share technique and ideas. Unfinished models are often very popular because people can see how a model was assembled or altered. There is usually a strong Penn Central, Conrail and Pennsylvania Railroad presence. The organizers are working to get some more New Haven modelers to attend. There is no judging with the hope so that people will not be intimidated about showing their work. All models are welcome.

There are some terrific clinics planned with presenters such as Jim Homoki, Matt Snell, Tony Koester, Mike Rose, and Ralph Hess. There will be layout tours on Sunday and Branchline Trains is expected to offer factory tours on Thursday night.

Can You Present A Clinic?

What does it take to present a clinic at a Division Meeting? Nothing more than an interesting idea and some good visual aids. Clinic presenters demonstrate modeling technique, share information about a favorite prototype, or expound on new ideas about layout planning. If you have never presented a clinic, the Division meetings offer you an informal and supportive environment.

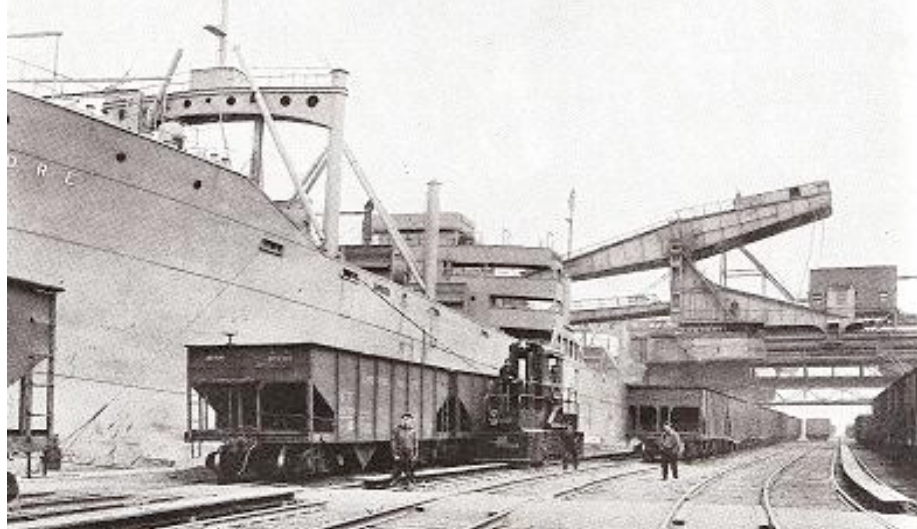
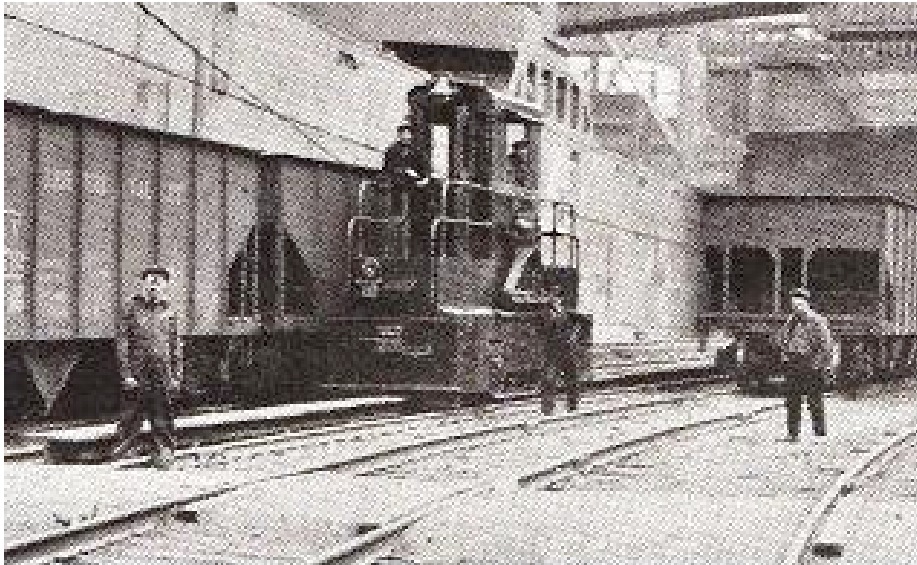
“Thieves and Speakers never reform.” Mark Twain

Mystery Photograph

The photographs below date from 1928 and shows the bulk carrier *SS Cubore* being loaded at Jersey City's Claremont Terminal. The *Cubore* is significant because she is one of the first ships to be fitted with diesel engines.

Note the rather unusual engine shunting the hopper cars. If you look closely you will notice that the engine is not on the same tracks as the hopper cars. There appears to be some sort of power supply in the middle of the track (Inside third rail?). The track also appears to be narrow gauge.

Can any readers shed some light on this operation?



If any readers have mystery photographs that they would like to share please contact the editor.

About the Whistle Post

The Whistle Post is the official newsletter of the Garden State Division of the Northeastern Region of the National Model Railroad Association, Inc.

The deadline dates for submission to the Newsletter for 2007-2008 are October 10th, January 10th, April 10th and July 10th.

Articles should be submitted to Kevin Olsen, Editor of the Newsletter, at olsenkbce@juno.com or 1 Shady Terrace, Wayne, NJ 07470.

For those of you just joining or who do not wish to have your Whistle Post mailed to you, or prefer a color copy, please go to our website at <http://www.trainweb.org/nergds/Newsletter.htm>. You will need a Adobe Reader to view and print them using your computer.

The Whistle Post mail subscription rate is \$7.00 per year. To renew, send a check or money order payable to the Garden State Division, and include your name, NMRA membership number, full address, telephone number and email address (if you have one). Payment should be sent to:

Roger Oliver
61 Franklin Road
Denville New Jersey 07834-1558

**The Whistle Post, Newsletter of the Garden State Division NMRA
Please inform us of any address corrections**